

# CAHABA RIVER

The Cahaba River is special in a state with many unique rivers. The diversity of the Cahaba River's fish population is greater than any other temperate river its size. It is the longest free flowing river in Alabama and has a wide diversity of plants and fishes due to the variety of its physical habitats and ecology.

West Blocton Coke Ovens Park  
cokeovenspark.com  
205 938 7622

Friends - CRNWR  
cahabafriends.com  
fws.gov/cahabariver

Brierfield Ironworks Historical State Park  
brierfieldironworks.org  
205 665 1856

Oakmulgee Wildlife Management Area:  
Bibb County Lake:  
William R. Ireland Sr. - Cahaba River WMA  
outdooralabama.com  
205 339 5716

Living River  
livingriver.org  
205 665 4535

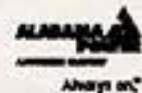
Talladega National Forest  
fs.usda.gov/alabama  
205 926 9765

## FOR MORE INFORMATION:

Alabama Cooperative Extension System  
Bibb County Office  
aces.edu/bibb  
205 926 4330

Bibb County Chamber of Commerce  
bibbchamber.org  
205 926 5222

Sweet Home  
Alabama  
www.alabama.travel



CAMP | FISH | RV | HUNT | HIKE

# BIBB COUNTY

VISITOR'S GUIDE

MAP  
INSIDE



**A** Historic West Blocton Coke Ovens Park once propelled Alabama into the ranks of the top iron producers in the world.



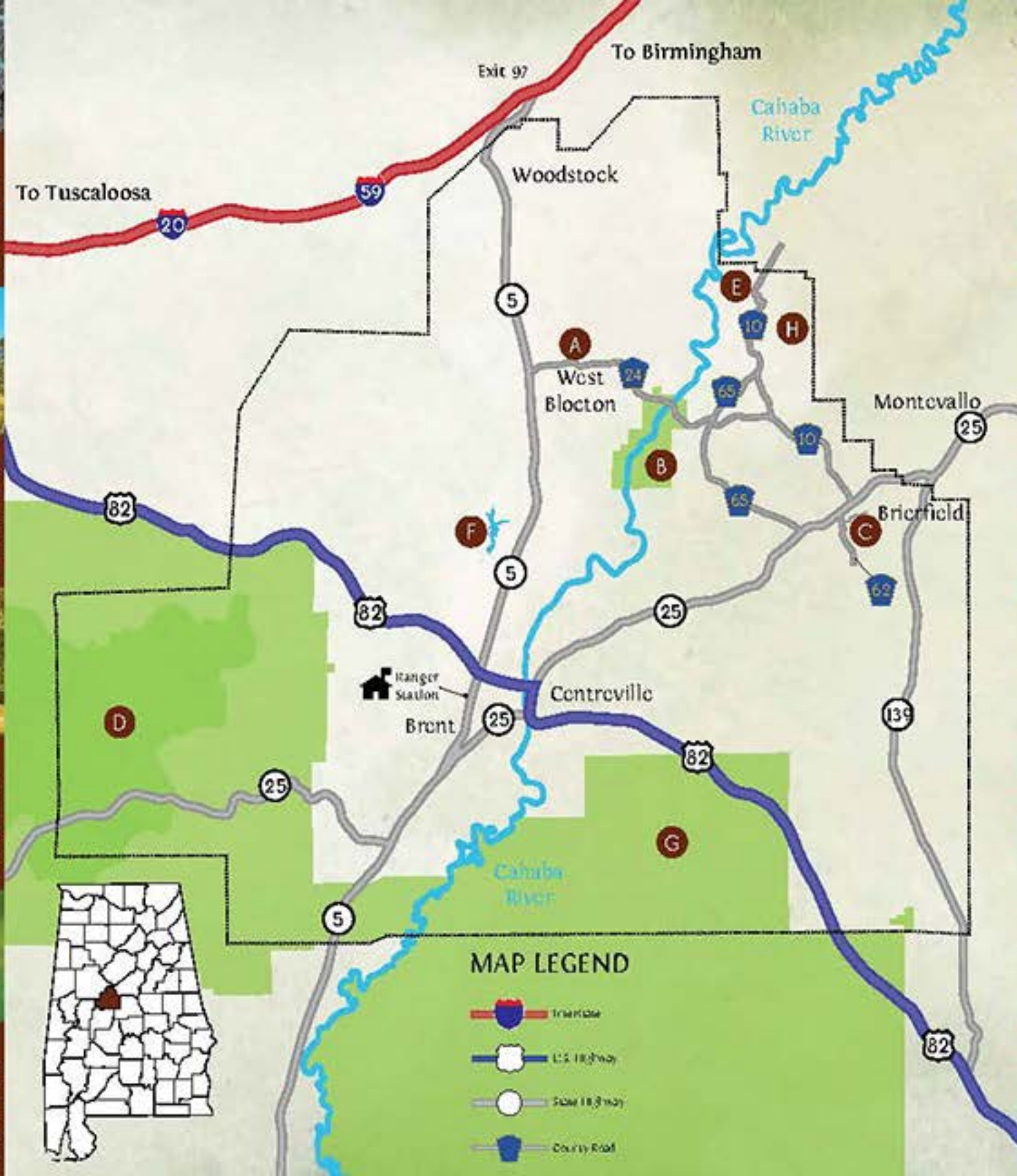
**B** The Cahaba River National Wildlife Refuge helps protect the biological heart of the Cahaba. Thirteen endangered species make this refuge their home.



**C** Once a major producer of pig iron for the Confederacy, Brierfield Ironworks Historical State Park is a great place for camping, hiking, picnicking and bird watching.



**D** The Oakmulgee Wildlife Management Area, in partnership with the Talladega National Forest, offers quality hunting and wildlife viewing.



**E** Living River is a peaceful retreat on the Cahaba River owned and operated as a non-profit by the Presbytery of Sheppards and Lapsley.



**F** Located in the heart of the county, Bibb County Lake is a prime destination for freshwater anglers.



**G** The Talladega National Forest, Oakmulgee Division, offers visitors access to vast areas of native longleaf pine forest.



**H** The William R. Ireland Sr. - Cahaba River Wildlife Management Area provides a myriad of outdoor activities including hiking, hunting, and wildlife photography.



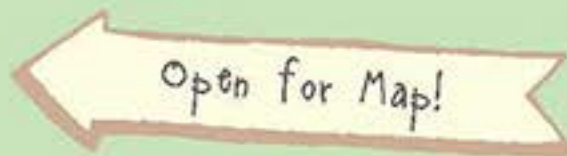
#### 2. WEST BLOETON COKE OVENS PARK

A symbol of late 19th Century growth and prosperity for West Bloeton, the coke ovens heated coal into coke to make iron. Coke from these ovens was transported by rail to the iron mills in Birmingham, temporarily fueling the economic and industrial growth of Central Alabama.



#### 4. BRIERFIELD IRONWORKS HISTORICAL STATE PARK

The beautiful grounds of Brierfield are a great place to picnic, swim and hike. There are also cabins to rent and hookups for RV'ers. This is a historical site and one of Bibb County's best kept secrets, fun for the whole family!



#### 6. TALLADEGA NATIONAL FOREST, OAKMULGEE DIVISION

Talladega National Forest, Oakmulgee Division provides access to the outdoors as few ever get to experience it. Miles of backwood roads await the hunter, camper, hiker, naturalist and horseback rider.



#### 8. WILLIAM R. IRELAND SR. - CAHABA RIVER WILDLIFE MANAGEMENT AREA

This WMA offers plenty of access points for hunting with numerous dirt and gravel roads traversing the interior. The terrain offers plenty of cover as well as access to the Cahaba River.



#### West Bloeton Coke Ovens Park

cokeovenspark.com  
205-935-7622

#### Friends - GUNWR

cahabafriends.com  
fwa.gov/cahabariver

#### Brierfield Ironworks Historical State Park

brierfieldironworks.org  
205-665-1856

#### Oakmulgee Wildlife Management Area: Bibb County Lake:

William R. Ireland Sr. - Cahaba River WMA  
outdoorsalabama.com  
205-339-5716

#### Living River

livingriver.org  
205-665-4505

#### Talladega National Forest

fs.usda.gov/alabama  
205-926-9765

#### FOR MORE INFORMATION:

#### Alabama Cooperative Extension System

Bibb County Office  
aces.edu/bibb  
205-926-4310

#### Bibb County Chamber of Commerce

bibbchamber.org  
205-926-5222



LIVING RIVER



BIBB COUNTY



Printed 11/2012, 40K. Photography by Daniel Twigg.

Explore Bibb County, Alabama



Living



Hiking



Camping



Picnicking



Bird Watching

Bibb County

Alabama

# go Bibb

# Wild!



#### 1. LIVING RIVER

Living River, a tree-covered point nestled in a deep bend in the Cahaba River, preserves a mix of hardwoods and older trees that were once typical of Alabama's river bottoms but elsewhere have been logged and replaced with faster-growing pines.



#### 3. CAHABA RIVER NATIONAL WILDLIFE REFUGE

Whether you are paddling the Cahaba River, strolling down the Piper Trail, fishing on the shoals of the river or seeing the Cahaba lilies blooming in the spring... the diverse Refuge has much to offer!



#### 5. BIBB COUNTY LAKE

Bring your favorite bait and fishing lure to "catch the big one" on this stocked lake in Bibb County. It is sure to be a relaxing day with friends or family.



#### 7. OAKMULGEE WILDLIFE MANAGEMENT AREA

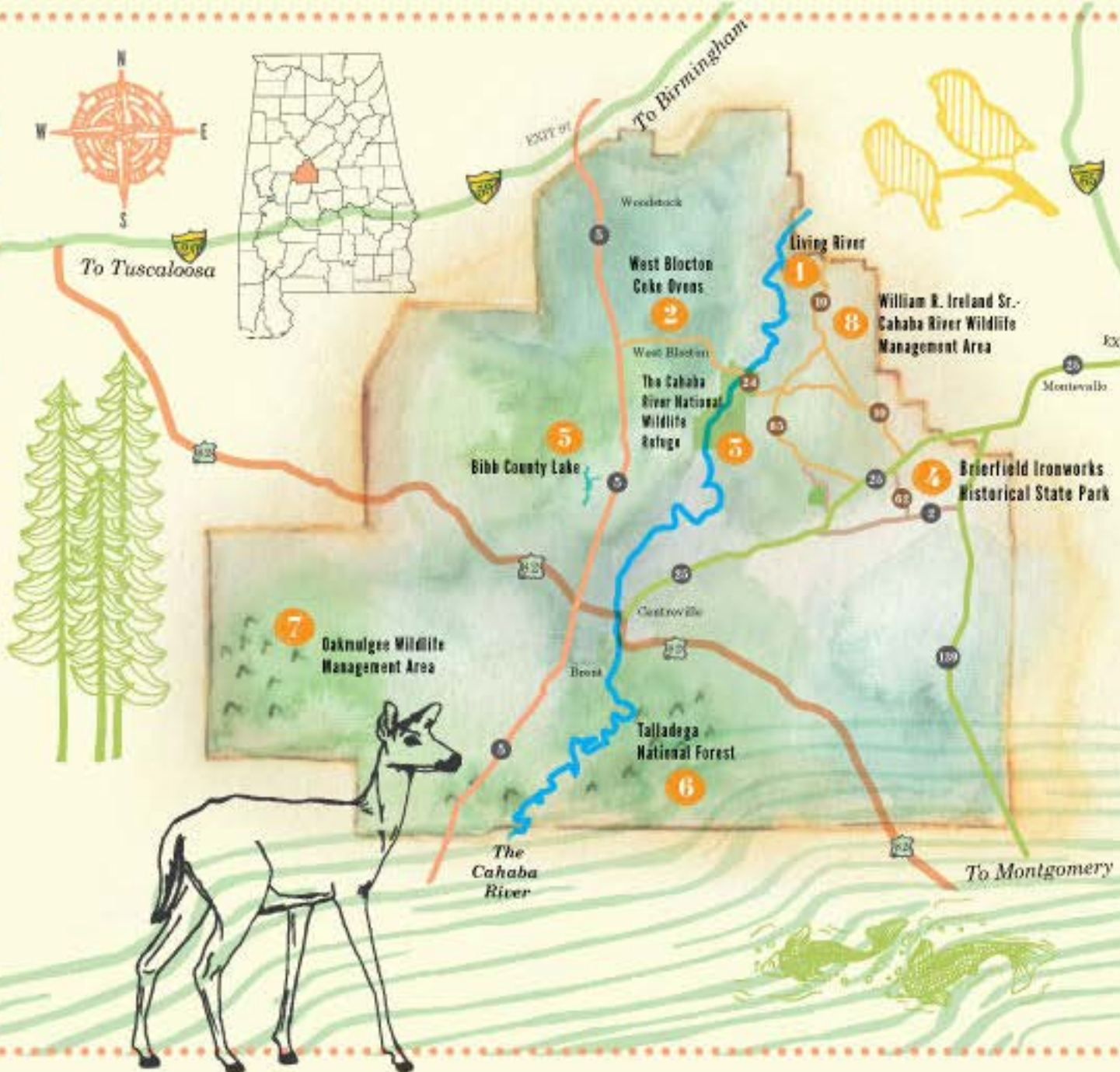
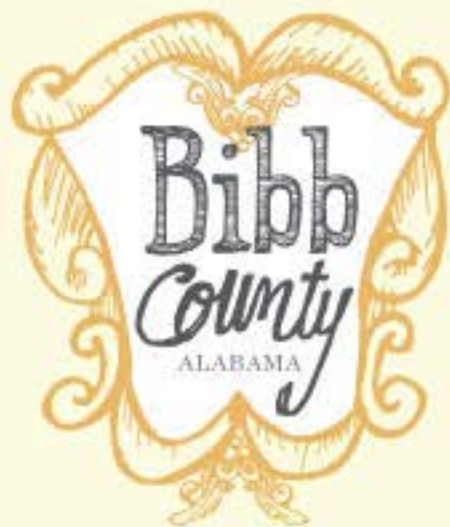
The Forest Service and Alabama Department of Conservation partner together to provide wildlife habitat and hunting opportunities on 44,000 acres. The Oakmulgee WMA provides quality spring gobbler hunting, trophy white-tailed deer and multiple small game opportunities.

**The Three Hour Tour...** For the avid fisherman, options include the state-owned *Bibb County Lake* and the *Cahaba River National Wildlife Refuge*, a perfect spot to set up on the sandy shores with a fishing pole or wade into the Cahaba River to catch the big one! Don't forget to purchase your Alabama fishing license.

**The Day Trip...** Take a trip and explore the lush countryside that sways in and out of beautiful Bibb County. Go see the rich industrial history that surrounds *The West Blocton Coke Ovens Park* or take a leisurely trip floating down the *Cahaba River* in the spring when the *Cahaba Lilies* are in full bloom. Stroll downtown *Centreville* and look for antiques or visit the *Bibb County Farmers Market* for some hot tobed peanuts and a jar of fresh local honey. If you're passing through in May, visit the *May Lily Festival*.

**The Overnight...** Bibb County has several options for those who love to sleep out under the stars. *Brierfield Ironworks Historical State Park* is a great place to park your RV, set up a tent for camping or rent one of the cabins on site. Check out the nearby *Historic West Blocton Coke Ovens* for some hiking or visit the *Cahaba Wildlife Refuge* for some fishing and canoeing!

**The Paddler's Dream...** Anyone who loves to canoe will love to see what canoeing the Cahaba River has to offer. There are canoe paths located at *Living River* and the *Cahaba River National Wildlife Refuge* area as well. Canoe the beautiful scenic *Cahaba River* in early spring when you can see the spectacular *Cahaba lilies* in bloom on the river shores within the *Cahaba River National Wildlife Refuge*.



	BIRMINGHAM	TUSCALOOSA	MONTGOMERY
1.	42	51	80
2.	42	57	84
3.	46	40	85
4.	47	49	74
5.	47	58	78
6.	52	55	72
7.	50	55	72
8.	46	45	79

(all mileage approximate)

Bibb County was created by the Alabama Territorial Legislature on February 7, 1818. The county was originally named Cahawba, a word derived from the Choctaw words *aka aba* (the river above) for the rapids and waterfalls on the Cahaba River. On December 4, 1820, the state legislature renamed the county in honor of Alabama's first Governor William Wyatt Bibb.



Illustrated by Katie Drueff & Amy Clark

**The Birdwatcher...** Bibb County is situated within the *West Alabama Birding Trail* so there are plenty of serene locations to visit and watch for the state bird, the yellowhammer, the blue heron, the Prothonotary Warbler, and many others. If you stay still enough, you can hear the industrious red-cockaded woodpecker or the distinct calls from a wild turkey gobbler.



**The Industrial Heritage Trip...** Bibb County has a rich Industrial Heritage that goes back for over a hundred years. The coal and iron industries brought to the *West Blocton* area immigrants whose efforts helped those industries grow. You can see four rows of dome-shaped coke ovens. At *Brierfield Ironworks Historical State Park*, you can see remnants of the once-thriving iron industry that supplied pig iron for the Confederacy.